

# PRESENCE WALL/FLOOR MOTORIZED UPDATE 2021



Updated: smooth and stylish for large and rotatable displays

Updated and improved!

SMS Presence Wall/Floor Motorized has a new elegant color option - Dark Grey, and a brand new mounting option, a Flipster rotatable mount for interactive displays that are able to switch between landscape and portrait orientation.

Just as before, SMS Presence Wall/Floor Motorized makes it easy to mount large and heavy displays on regular walls. The smart design shifts the weight to the floor. Installation is quick, easy and stylish. A perfect support in the lobby area or conference room. Furthermore, the stand itself uses very little floor space and is perfect in small spaces where a bracket with legs would be in the way.

Everyone can reach thanks to the soft motorized height adjustment. The SMS Presence Wall/Floor Motorized is extensively pre-mounted for easy installation.



## ▲ ARTICLE NUMBER

K05-146-22

SMS Presence W/F Motor Flipster DG

## ▲ INCLUDED PRODUCTS

### **SMS Presence W/F Motor Covers DG**

1 x 05-031-2

### **SMS Presence Flipster Holder DG**

1 x 05-026-2

### **SMS Presence W/F Motor Body 150**

1 x 05-018-21

## ▲ INFO

PLACEMENT	Wall/Floor
MOTORIZED	Yes
LOCKABLE	Yes
HEIGHT ADJUSTABLE	Yes
HEIGHT ADJUSTABLE SPEC	500
CERTIFICATES	CE
ROTATION: PLUS	90
VESA HORIZONTAL	300 - 400
VESA VERTICAL	200 - 400
MAX WEIGHT [KG]	50
WARRANTY [YEARS]	2

# PRODUCT VARIATIONS

K05-143-22 - SMS PRESENCE W/F MOTOR 1000X600 EU DG

---

K05-146-22 - SMS PRESENCE W/F MOTOR FLIPSTER DG

---

K05-142-22 - SMS PRESENCE W/F MOTOR 600X400 EU DG

## ACCESSORIES



### SMS PRESENCE CAMERA SHELF

PR100001



### SMS PRESENCE SHELF - WALL/FLOOR

PR100004-P0

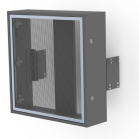
### SMS PRESENCE SHELF - MOBILE

PR100002-P0



### SMS REMOTE CONTROL KIT

AE018002



### SMS PRESENCE TOWER BOX - WALL/FLOOR

C5-21U004-2-A

### SMS PRESENCE TOWER BOX - MOBILE

C5-21U006-2-A